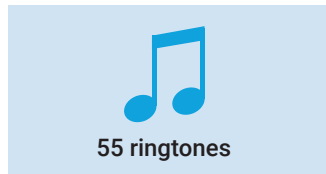
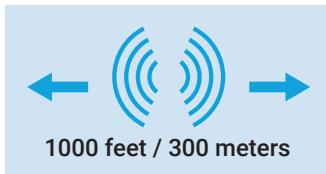


Domilia Wireless Call Buttons and Pager



User Guide

Recommended Use:

Home usage:

- For patient calling the caregiver at home.
- Push call button is waterproof and easy to carry. Can be carried in a pocket or as a pendant with the included strap.
- Pager/Chime Unit has 55 different ring tones.
- Operating range is 1000 feet (300 meters).
- 5 Level adjustable volume from 0db to 110db.
- Easy installation.



Receiver

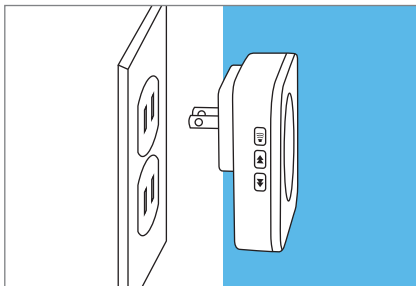


Door Magnet

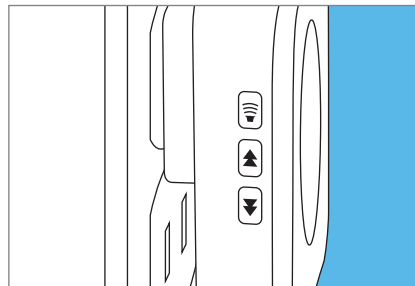


Call buttons

Installation:




Plug the receiver in a 110-260v outlet.



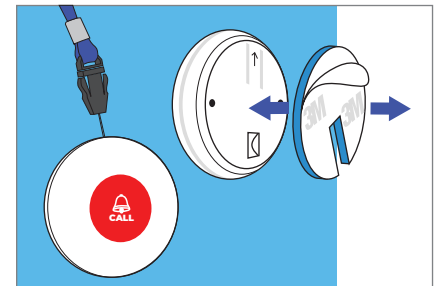
Select the ringtone / Pairing

Press forward  or  backward to choose the melody - 55 choices are available.

Press the  for 5 seconds until makes a ring sound. This means the bell is in pairing mode, you have 8 seconds to make adjustments.

Quickly press the button of the transmitter, it will make a ring sound and the receiver flashes.

Press the button of the transmitter again to confirm the ringtone, if so the pairing is done.



Use the supplied strap to carry the call button around your neck.

Use the double sided tape supplied with the kit to stick the transmitter on the surface of your choice.

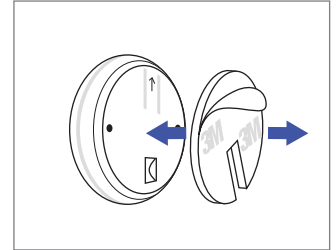
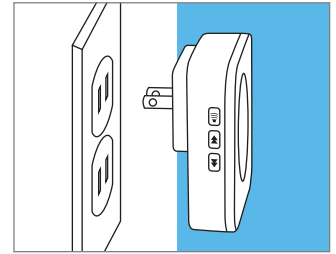
How to use:

1-Plug the receiver in a 110-260v outlet


2-Place the transmitter where you wish to use it, and with the doors closed, press the button to test if the receiver bell rings.

If the transmitter doesn't ring it may be due to metal on the sticking surface, try to reposition the transmitter.

3-Stick the transmitter with the supplied double sided tape.



Sound level (up to 5 levels):


The volume of the bell can be adjusted by pressing 

Each time you press the button, the volume increases.

If the maximum is already set, it will get back to level 1 which is the silent mode.

Change the melody:

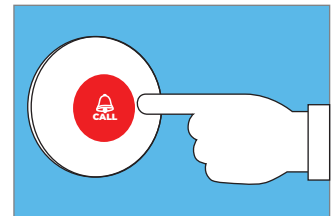
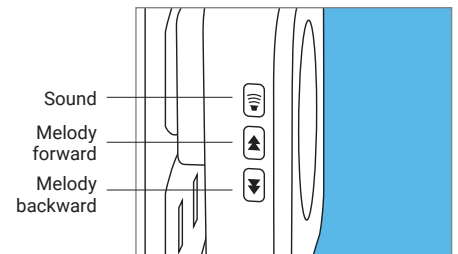
The melody can be set to one of the 55 selections.

Press the  for 5 seconds until makes a ring sound. This means the bell is in pairing mode, you have 8 seconds to make adjustments.

Press the  or  buttons to select to melody.

Quickly press the button of the transmitter, it will make a ring sound and the receiver flashes.

Press the button of the transmitter again to confirm the ringtone. This will set the selected melody.



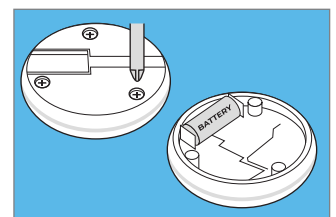
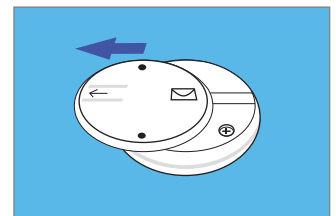
Changing the battery:

Slide the back cover following the arrow.

Remove the 3 screws with a phillips screwdriver and remove the protecting cover.

Remove and change the old battery.

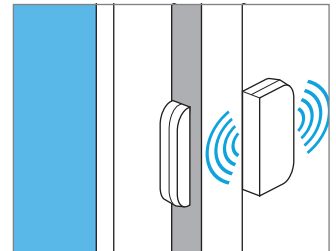
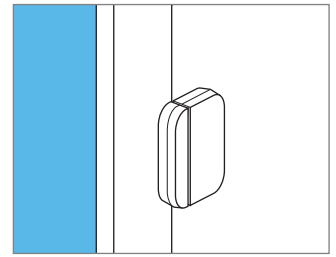
Refit the protecting cover with the screws and slide the back cover.



How to use the magnets:

1-Close the door and stick the 2 parts of the magnets, one on the door frame, the other on the door so both are side by side.

2-When the door opens, if the magnets are separated beyond 4in, the signal is sent to the receiver.



Innovate - Prevent - Communicate